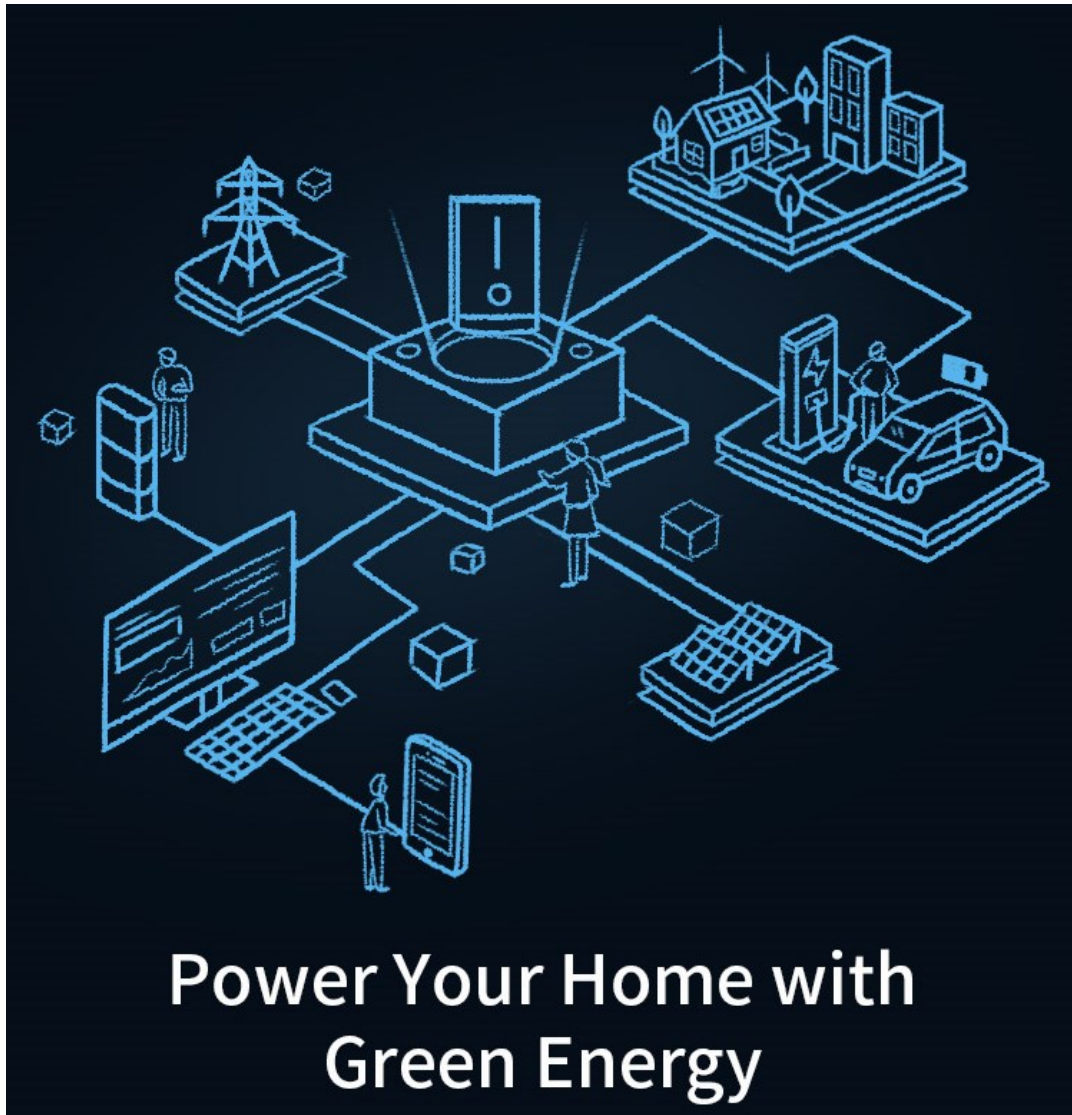


Livoltek-portal User Manual For End User

Apply for Livoltek-portal V2.1



This document is subject to change without advance notice.

Contact: www.livoltek.com

Ver.2022.04

Content

1	Overview	1
1.1	Target Audience	1
2	Login Platform	1
2.1	Registration	1
2.2	Login	2
2.3	Forgot Password.....	3
3	Use the platform	3
3.1	Home Page	3
3.2	Site Details.....	4
3.3	Device Details.....	5
3.4	Notification & Subscribe	5
4	Build New Sites & Add Device.....	6

1 Overview

1.1 Target Audience

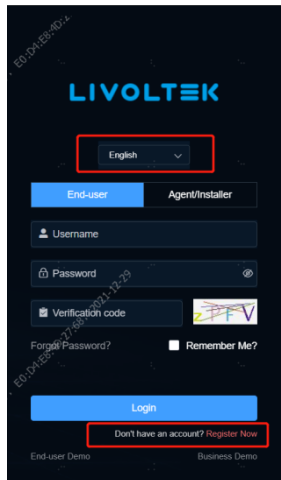
This manual is intended to guide end-users using the Livoltek-portal monitoring platform for monitoring LIVOLTEK devices. The reader needs to have basic knowledge of IoT and understand the product features of LIVOLTEK inverters. Please read this manual carefully before using the Livoltek-portal (hereinafter referred to as the platform).

2 Login Platform

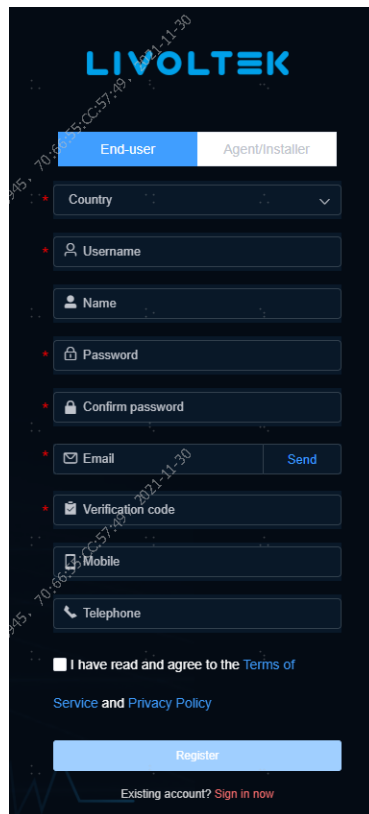
Enter the URL "<https://www.livoltek-portal.com>" in your browser to access the platform and you can select the language on the right side.

2.1 Registration

Click the *Register Now* below the <Login> button to enter the registration page.

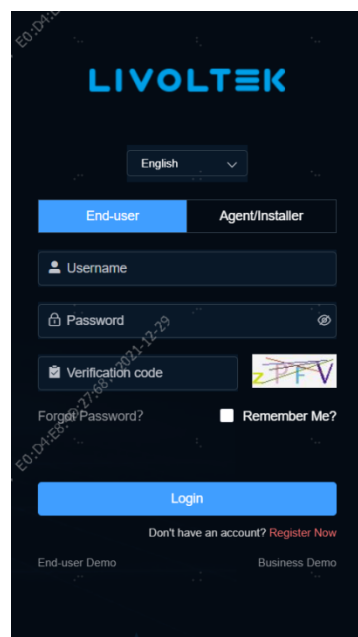


- 1) Fill in the account and email information, click the send button, the system will send the verification code to your email.
- 2) Please get the verification code and enter it in the input box.
- 3) Read the *Terms of Service* and *Privacy Policy* and check it, then click register.



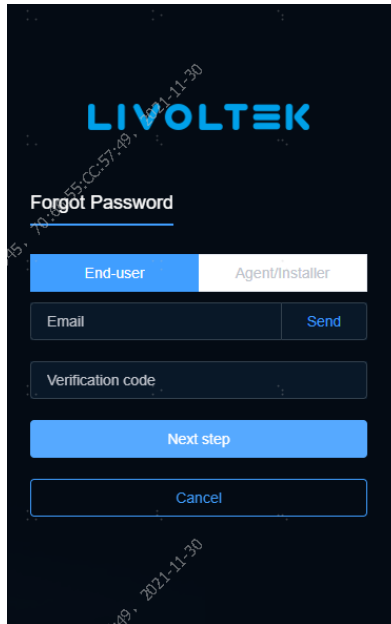
2.2 Login

Enter the login page, fill in username, password and verification code, and click the login button to access the monitoring platform.



2.3 Forgot Password

Click "Forgot password?" below the verification code input box. Enter the forgot password page, enter the verification code sent by email to change your password, and click [Next step] to enter your new password.



The screenshot shows a mobile application interface for 'LIVOLTEK' with the title 'Forgot Password'. At the top, there are two tabs: 'End-user' (selected) and 'Agent/Installer'. Below the tabs is an 'Email' input field with a 'Send' button to its right. Underneath is a 'Verification code' input field. At the bottom, there are two buttons: a blue 'Next step' button and a white 'Cancel' button.

3 Use the platform

3.1 Home Page

The platform's home page shows the statistical indicators of sites and the list of sites under the user name.

You can view the total number of sites, the number of device, power generation and other information in the power station statistics.

In the list of sites, you can view the status of sites and power generation data, and manage the sites. If all device in the power station is online, the status is green "online", if some device in the power station is offline, the status is yellow "Some Offline", if all device in the power station is offline, the status is red "All Offline".

Click the site icon in the list to view the details.



3.2 Site Details

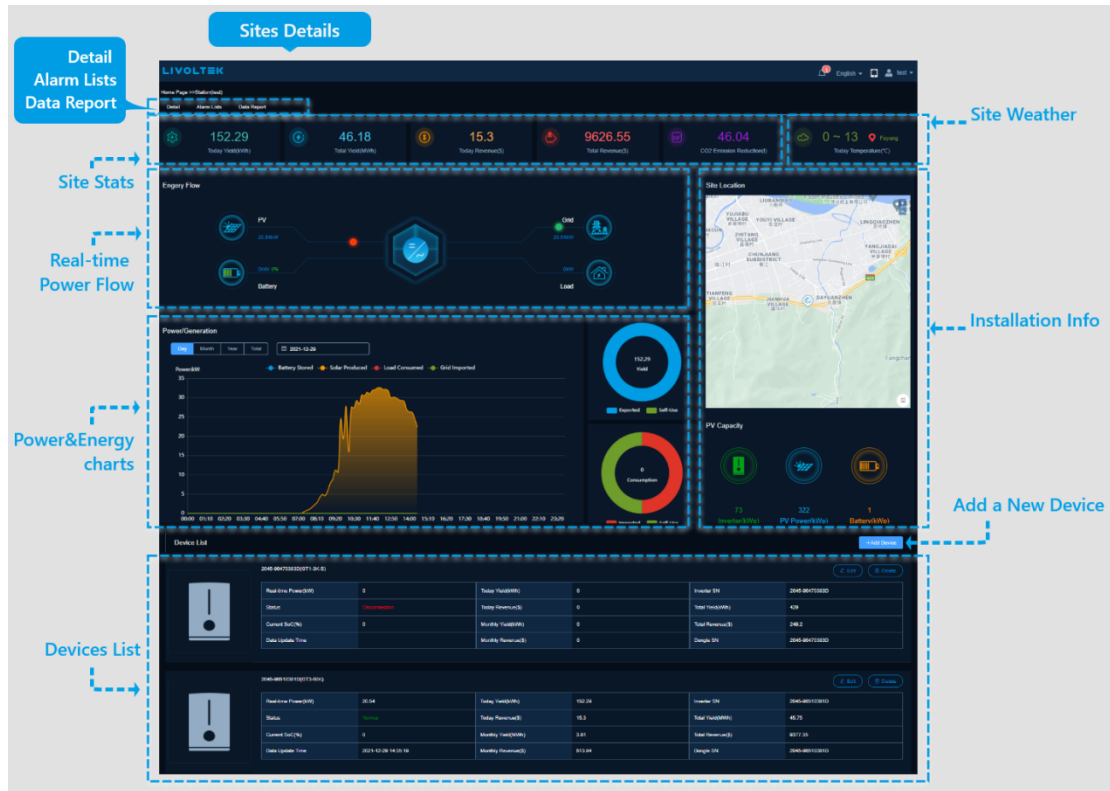
The site details supports switching tabs to view details, alarm list, and data reports.

[Site details] tab include:

- Site statistics indicators: today's generation, lifetime generation, today's revenue, lifetime revenue and lifetime CO2 reduction;
- Site daily weather based on installation info;
- Installation information: address, time zone, and installed PV capacity;
- Real-time power flow;
- Statistical charts of power and generation of the site;
- Device list in the site, and you can manage your devices as well;

[Alarm list] tab by default shows all device in the site today's alarm content, switch time to view more alarm information.

[Data reports] tab can view and export the monthly, annual and lifetime generation reports of the site.



3.3 Device Details

The device details supports switching tabs to view device details, alarm list, and data reports.

[Device details] tab include:

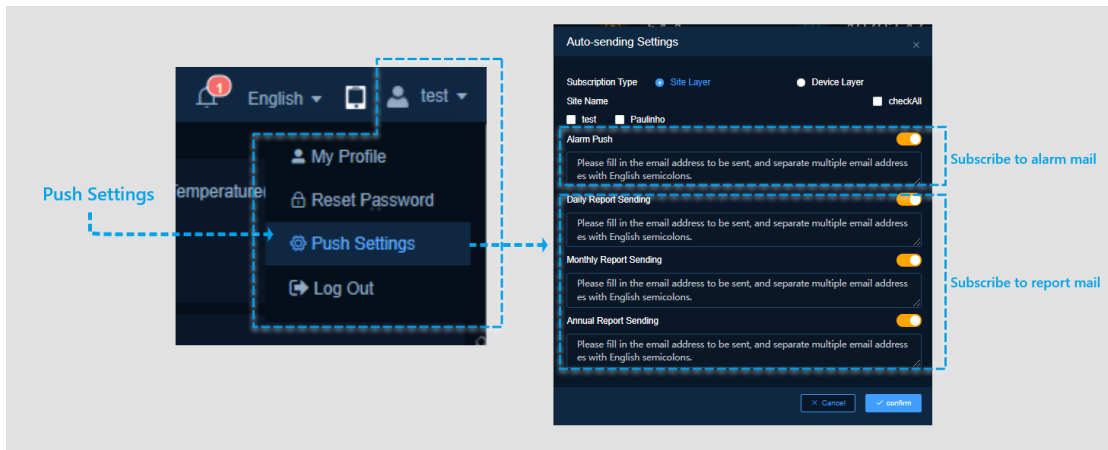
- Device statistical indicators: today's generation, lifetime generation, today's revenue, lifetime revenue and lifetime CO2 reduction;
- Site daily weather based on installation info;
- Device information: the site name which this device belongs to, device SN, rated power, communication status, working status, last data updates;
- Real-time power flow of the device;
- Power and generation charts of the device;

[Alarm list] tab shows the content of today's alarms of the device by default, switch the time to view more alarm information.

[Data report] can view and export the detailed daily data details and monthly, yearly and lifetime generation reports of the device.

3.4 Notification & Subscribe

In the push settings of user management, you can choose to subscribe to alarm emails for sites and device as well as monthly, yearly and total statistical reports of data.



4 Build New Sites & Add Device

Click the "Add site" button on the top of the power station list on the home page to start building a new site;

Completing the basic info, site settings and Tariff Settings;

Click "Confirm" to build a new PV site.

Step1: Basic Info

- Choose site installer
- Fill site name
- Choose site timezone, which cannot be modified after the site is created
- Choose site address with Google map
- Check site privacy setting, if allow installers and agents to access to this site

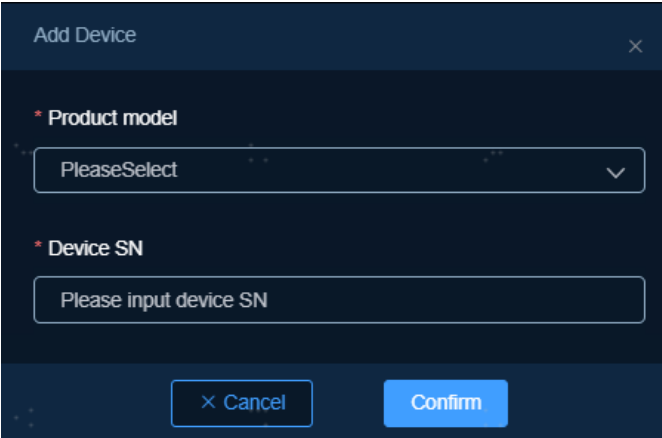
Step2: Site Settings

- Choose site type
- Fill PV total capacity

Step3: Tariff Settings

- Choose currency
- Add consumption price and feed-in price, support to time-of-use price.

Click the "Add Device" button at the top of the device list on the site details page, select the inverter model and enter the inverter SN to add the device.



The image shows a dark-themed dialog box titled "Add Device" with a close button (X) in the top right corner. It contains two required fields, each marked with an asterisk (*):

- * Product model:** A dropdown menu with the text "PleaseSelect" and a downward arrow icon.
- * Device SN:** A text input field with the placeholder text "Please input device SN".

At the bottom of the dialog, there are two buttons: "Cancel" (with a small X icon) and "Confirm".